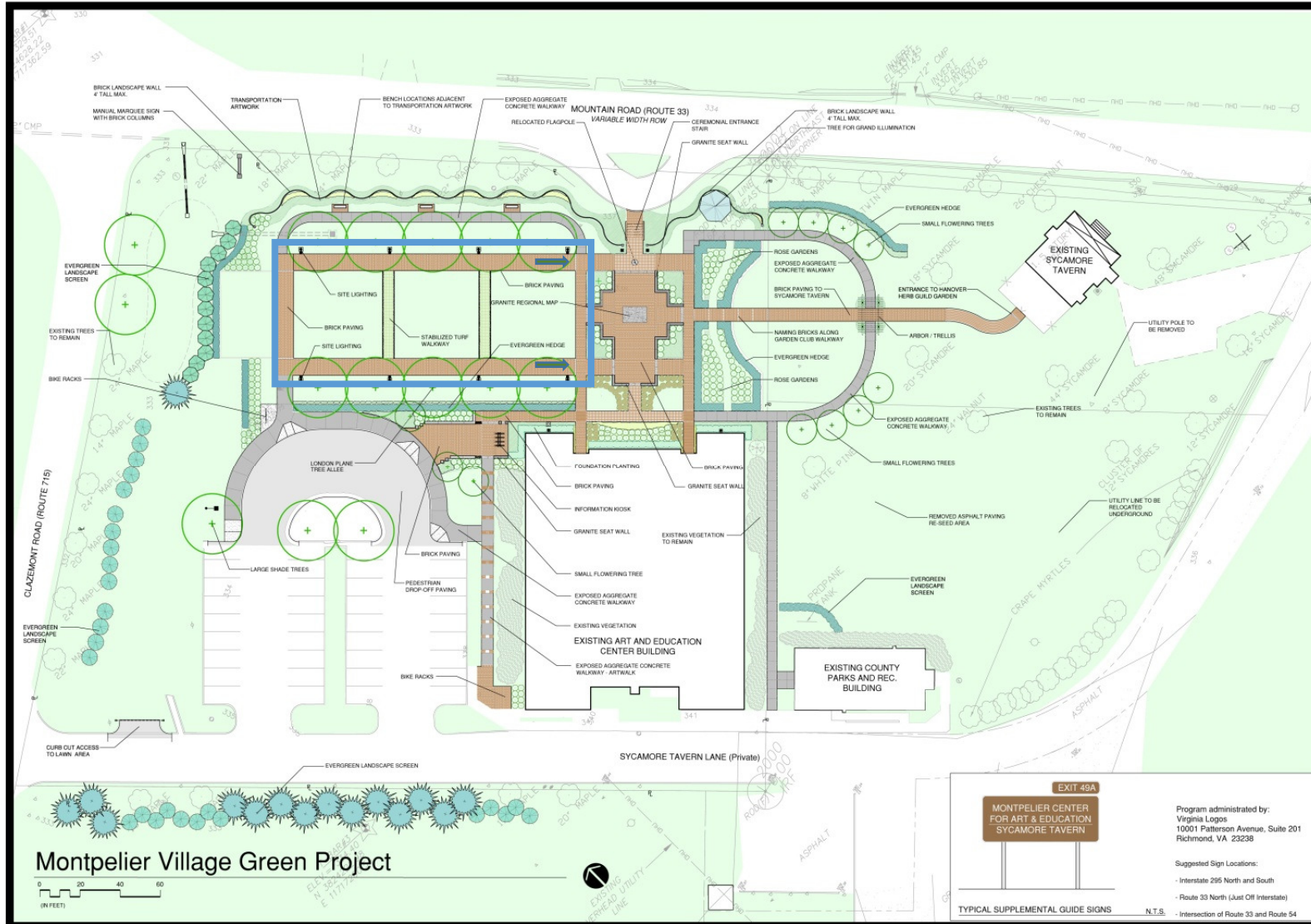


Potential Stanley Allee at Village Green, The Montpelier Center for Arts & Education

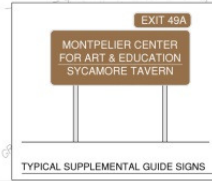
Blue lines indicate where the Allee will be located if funding received.

Arrows mark where the two granite band will be located once all funding received.



Montpelier Village Green Project

0 20 40 60
(IN FEET)



Program administered by:
Virginia Logos
10001 Patterson Avenue, Suite 201
Richmond, VA 23238

Suggested Sign Locations:
- Interstate 295 North and South
- Route 33 North (Just Off Interstate)
- Intersection of Route 33 and Route 54

date Aug 2011
drawn by rtw
checked by wdm
file no.
revised

Overall Plan
The Montpelier Center for Arts and Education

Carlton Abbott and Partners, P.C. Architects
P.O. BOX 81
Williamsburg, Virginia 23187
Tel: (757) 235-1055
Fax: (757) 235-8004
email: carlton@carltonpartners.com

1